

DÜĞÂH-MÂYE  
(Gülşenî Savtı)

DÜYEK

şit sö

züm yâ

gü

gü

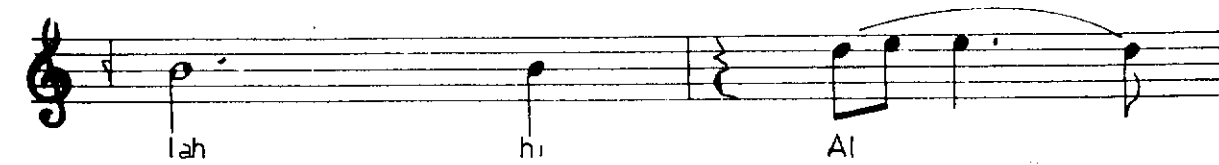
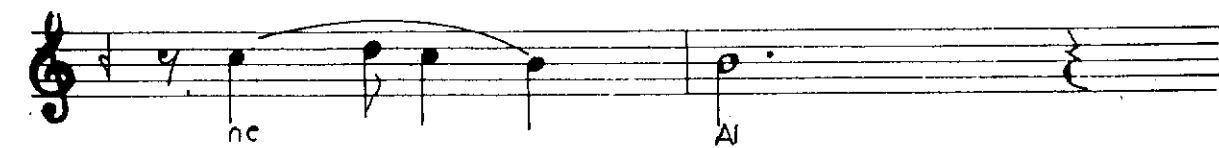
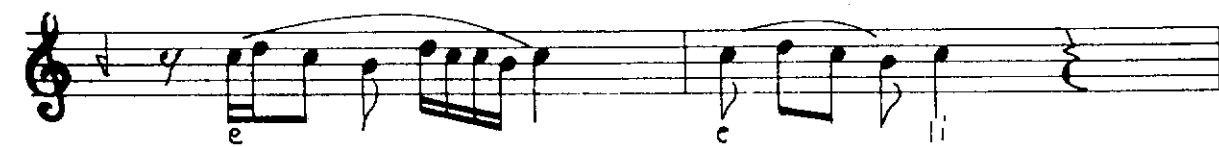
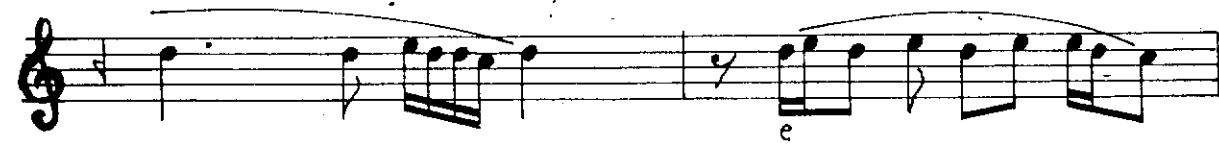
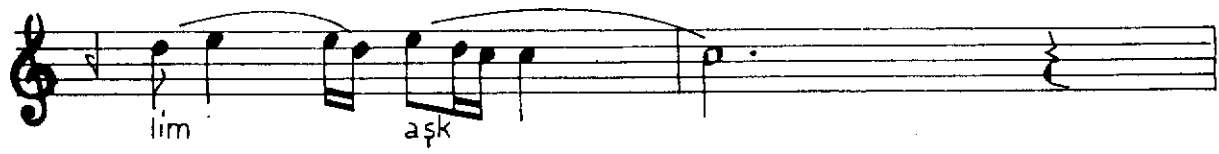
gü gü

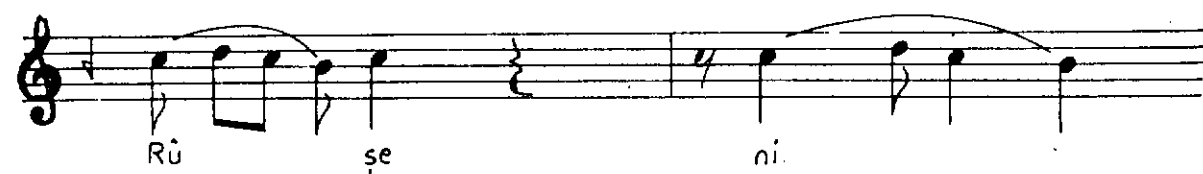
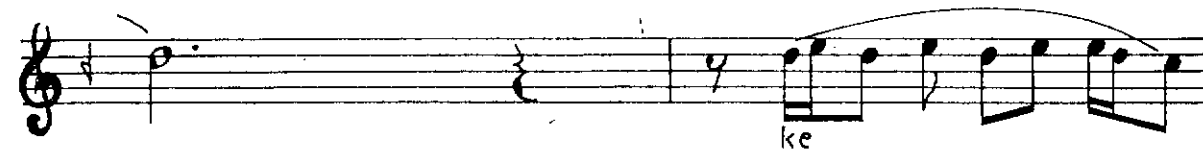
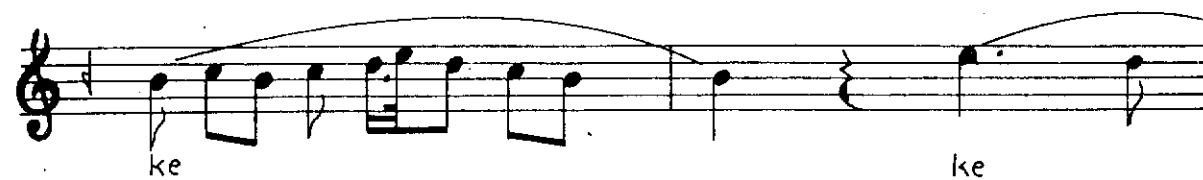
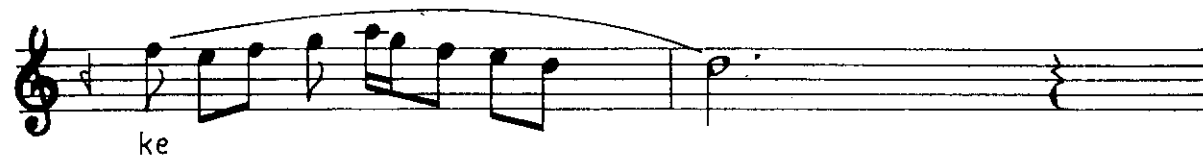
gül şe ní

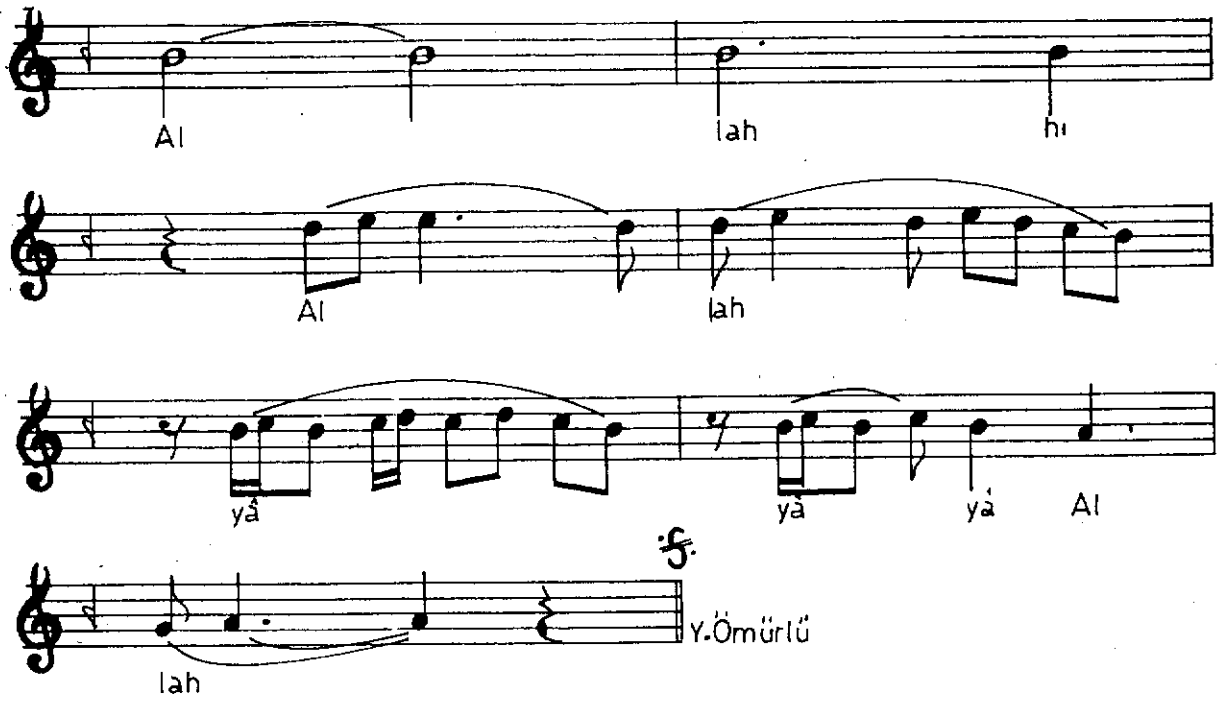
Al lah hu

Al lah

yâ yâ yâ Al







İşit sözüm pîrim yâ Gülşenî (Allah, Allah, yâ, yâ, yâ, Allah)  
Gel gidelim aşk eline (Allah, Allah, yâ, yâ, yâ Allah)  
Şâhdır o milke RÜŞENÎ (Allah, Allah, yâ, yâ, yâ Allah)  
Gel gidelim aşkın eline